


# NEW calendar for the collection of refuse from individual establishments

 **22:00h.**  
**a 24:00h.**

Consult the new weekly calendar of refuse collection and remember that rubbish must be put out between 21 h and 24 h.

## Low season (16 november – 14 march)

MONDAY	TUESDAY	WEDNESDAY	THURSDAY	FRIDAY	SATURDAY	SUNDAY
 *				 *		
						
						
						
						

## High season (15 march - 15 november)

MONDAY	TUESDAY	WEDNESDAY	THURSDAY	FRIDAY	SATURDAY	SUNDAY
 *		 *		 *	 *	
						
						
						
						

\* To be put out before 8 a.m.



**Capdepera recicla**  
"MÉS VERDA, MÉS VIVA"

Recycle organic material in the best interest of everyone!

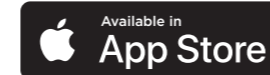
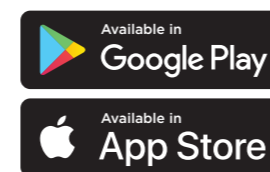
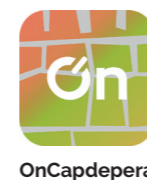
971 56 30 52

[www.ajcapdepera.net](http://www.ajcapdepera.net)  
[residus.es/capdepera](http://residus.es/capdepera)

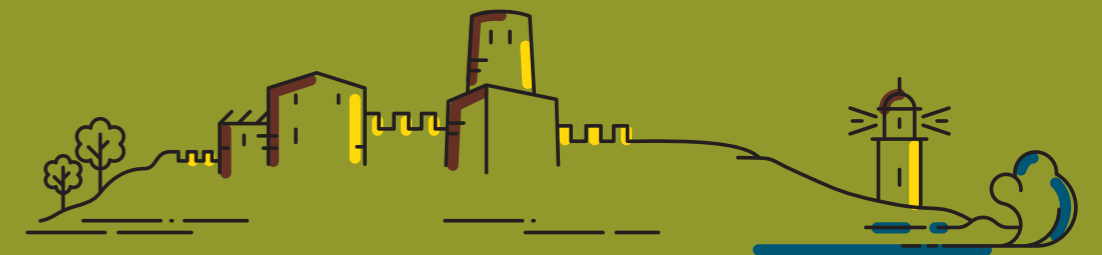


**Capdepera recicla**  
"MÉS VERDA, MÉS VIVA"

Guidelines from the refuse collection service for individual establishments



Ajuntament de Capdepera



# What can be classed as organic rubbish?

Organic rubbish is compostable material, anything that started as a living organism such as leftovers from food or plants.

YES



Leftovers of fruit, vegetables, meat and fish



Nut shells, eggshells and seafood shells



Sausage skins, fish and meat bones



Kitchen paper with food remains



Coffee grains and teabags



Small amounts of garden cuttings or weeds

No

- Nappies, sanitary pads and tampons
- Liquid food leftovers and all kinds of oil
- Dust and vacuum cleaner bags
- Ash and cigarette butts
- Garden rubbish that has been treated with pesticides
- Treated wood
- Medication
- Excrements and other animal remains
- Textiles and leather goods

Organic rubbish is to be put:

In compostable and/or transparent plastic bags in approved brown containers.



YES

- Glass bottles
- Glass jars
- Perfume bottles

No

- Light bulbs and fluorescent strips
- Plate glass and mirrors
- Ceramics and porcelain
- Plates, cups and glasses

Glass must be put out:

In approved green containers, no plastic bags.

YES



- Plastic bottles and pots
- Plastic bags and cling film
- Milk and juice cartons (tetra packs)
- Tins and aerosols
- Plastic and hard foam food trays
- Lids and metal screw tops
- Aluminium foil

No

- CD and DVD
- Toys
- Textiles and shoes
- Full containers
- Containers of toxic products

Lightweight packaging material must be put out:

In approved yellow containers or in yellow and/or transparent plastic bags with a capacity of 90 or 120 litres.

YES



- Newspapers and magazines
- Folders, envelopes and paper
- Paper plates and cups
- Cardboard boxes
- Packing paper

No

- Milk and juice cartons (tetra packs)
- Paper with aluminium or plastic attached
- Paper that is contaminated with oil, paint or food
- Paper tissues and wipes
- Kitchen paper
- Spiral binders

Paper and cardboard must be put out:

In approved blue containers, folded in cardboard boxes or tied up with string to prevent papers from flying about, but not in plastic bags.



YES

- Dust and swept rubbish
- Ceramics and porcelain
- Toys
- Mirrors
- Paper with oil or paint on
- Razor blades
- Excrement, sanitary
- Towels and nappies
- Ash and cigarette butts
- Hair clippings
- Wipes, bandages and plasters

No

- Dangerous items
- Bulky rubbish
- Rubble
- Liquids

Other rubbish must be put out:

In plastic bags in approved grey containers.

## Remember:

- The name of the establishment and type of rubbish must be indicated on each container.
- The containers will be put out by the door, in the rubbish area or where previously agreed with the Council.
- Containers must be taken inside at the latest 30 minutes after refuse collection, or on opening the establishment in the case of refuse collection at night.

## Other rubbish:

- To dispose of vegetable oils, electrical and electronic rubbish, dangerous items (paint, mineral oils, light bulbs,...) **please contact an approved refuse collector.**
- Outdated or surplus medication **must be handed into the pharmacy.**

**Recycle organic material in the best interest of everyone!**